



UNIVERSITY OF
THE AEGEAN

**“Insularity and sustainability-context and case studies in different European Islands”,
Lesvos 15-29 September 2013**

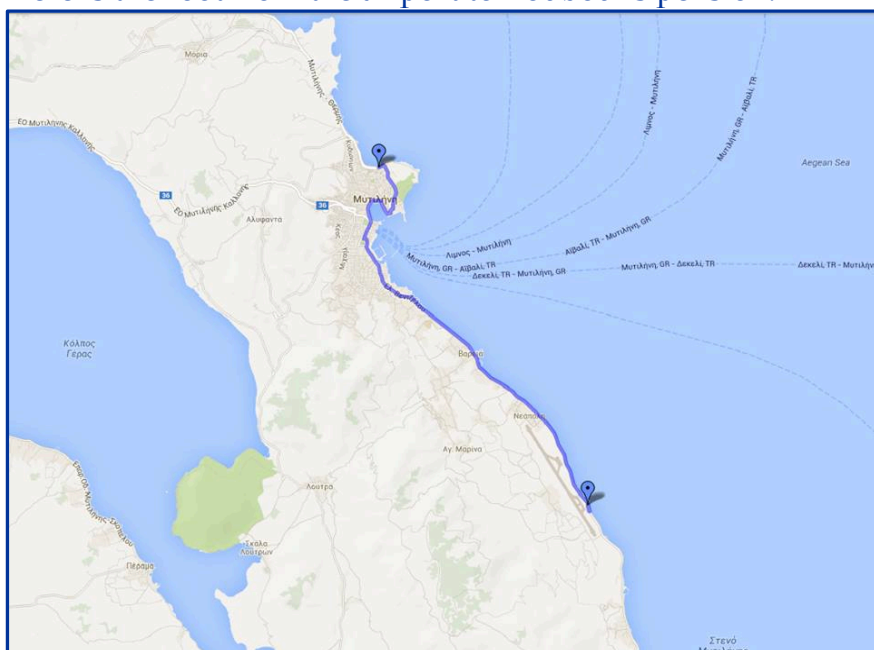
IP Guidelines 2013/14

Dear IP students!

We are very happy to welcome you to our University and to Lesvos Island. In order to make your stay on the island a fulfilling and unforgettable experience, we have prepared some last details before your trip:

- **Our first meeting** will take place on **Monday 16th of September 2013 at 9 o'clock in the morning** at the campus which is located at the University Hill and our meeting point will be outside the building of the Department of Geography. **The course starts** just after the introduction of the IP.
- When you arrive in Lesvos, you can either take a taxi or bus from the airport to Zouboulis rooms (street: Navmaxias Ellis 11, Mytilini). The cost by taxi for 4 persons with a luggage can't be over 15euros.

Here is the route from the airport to Zouboulis pension:



- **You need to confirm the time of your arrival with** Zouboulis Rooms. You have to phone Ms Zoubouli (phone number: 0030 6943473149) to inform her about the date and time of your arrival.
- We strongly advise you to bring an extra pair of sheets and towels.
- It is compulsory all the IP participants to have medical insurance.
- Your **academic obligations** for the course will finish on Friday 27/9.

More questions:

Don't hesitate to contact us if you have any more questions. We will try to answer as quickly and precisely as possible. It is advisable that you send all correspondence via email. Should you have any questions concerning the above, or further comments and complaints regarding your accommodation please do not hesitate to contact us:

Rallou Matzourani

rmatzourani@aegean.gr

Tel to the office: (0030) 22510 36118

Useful Contacts

University Contacts

Department of Geography: 0030 22510 36400, 36402

Student's Care Office: 0030 22510 36136

Library: 0030 22510 36030-32

Local Contacts

Airport: 0030 22510 38700, 61590

Port: 0030 22510 40827, 24115, 47888, 108

Emergency Calls

Ambulance: 166

Hospital: 22510 57700

Police: 100 City Police: 22510 41911

Fire Brigade: 199

Emergency: 166